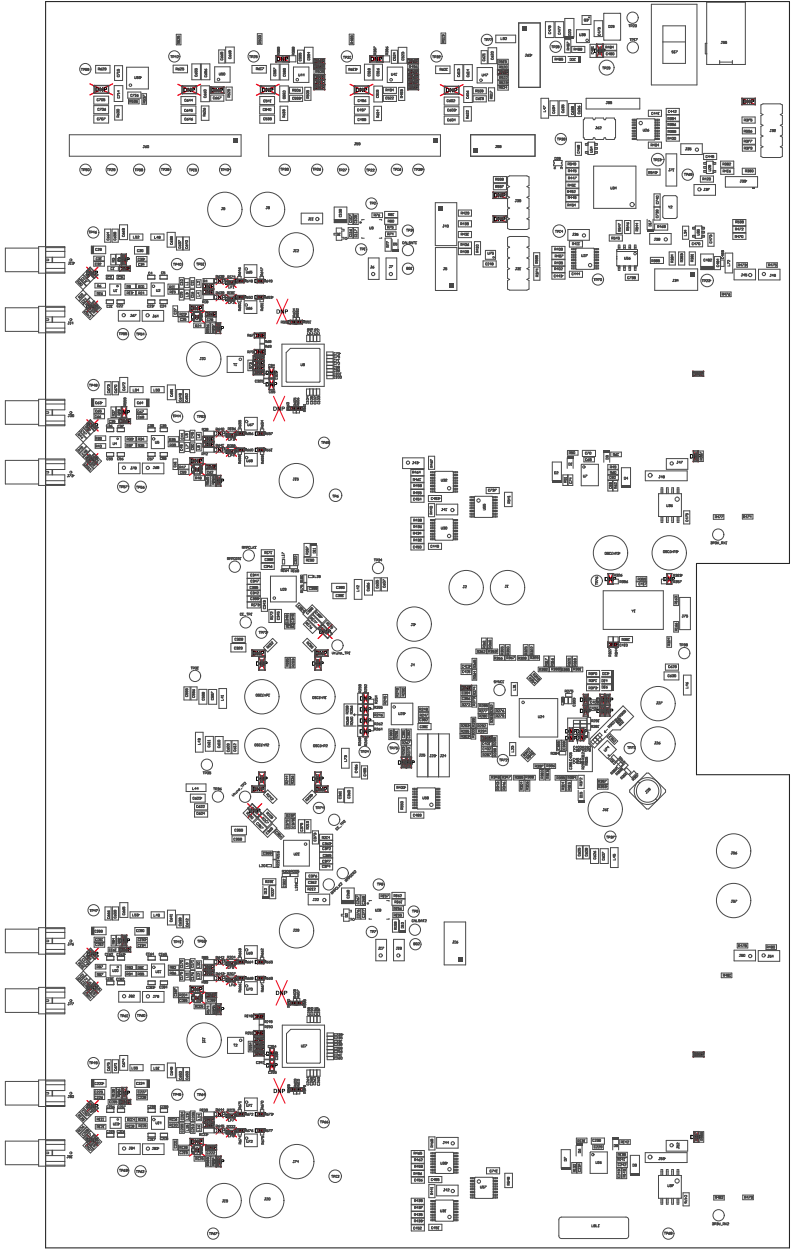


- 101 These labels are different from other food carts, they shall be 2 ft high. They shall be per the label table in the RFI appendix.
- 102 These assemblies are still assembly, RF procedure shall be observed.
- 103 These assemblies shall be clean and free from any oil or contaminants, keep it as clean as you can assemble.
- 104 These assemblies and carts are assembly cart, they shall be clean, it shall be clean.



APPENDIX THREE: TYPICAL FOOD SERVICE EQUIPMENT

APPENDIX THREE: TYPICAL FOOD SERVICE EQUIPMENT

APPENDIX THREE: TYPICAL FOOD SERVICE EQUIPMENT

APPENDIX THREE: TYPICAL FOOD SERVICE EQUIPMENT	APPENDIX THREE: TYPICAL FOOD SERVICE EQUIPMENT	APPENDIX THREE: TYPICAL FOOD SERVICE EQUIPMENT	APPENDIX THREE: TYPICAL FOOD SERVICE EQUIPMENT	APPENDIX THREE: TYPICAL FOOD SERVICE EQUIPMENT
APPENDIX THREE: TYPICAL FOOD SERVICE EQUIPMENT	APPENDIX THREE: TYPICAL FOOD SERVICE EQUIPMENT	APPENDIX THREE: TYPICAL FOOD SERVICE EQUIPMENT	APPENDIX THREE: TYPICAL FOOD SERVICE EQUIPMENT	APPENDIX THREE: TYPICAL FOOD SERVICE EQUIPMENT
APPENDIX THREE: TYPICAL FOOD SERVICE EQUIPMENT	APPENDIX THREE: TYPICAL FOOD SERVICE EQUIPMENT	APPENDIX THREE: TYPICAL FOOD SERVICE EQUIPMENT	APPENDIX THREE: TYPICAL FOOD SERVICE EQUIPMENT	APPENDIX THREE: TYPICAL FOOD SERVICE EQUIPMENT
APPENDIX THREE: TYPICAL FOOD SERVICE EQUIPMENT	APPENDIX THREE: TYPICAL FOOD SERVICE EQUIPMENT	APPENDIX THREE: TYPICAL FOOD SERVICE EQUIPMENT	APPENDIX THREE: TYPICAL FOOD SERVICE EQUIPMENT	APPENDIX THREE: TYPICAL FOOD SERVICE EQUIPMENT

